

The new CMOS Tracking Camera used at the Zimmerwald observatory

M. Ploner, P. Lauber, M. Prohaska, P. Schlatter,
T. Schildknecht, A. Jaeggi

Astronomical Institute, University of Bern, Switzerland

18th International Workshop on Laser Ranging

11–15 November 2013

Fujiyoshida, Japan

Tracking Cameras

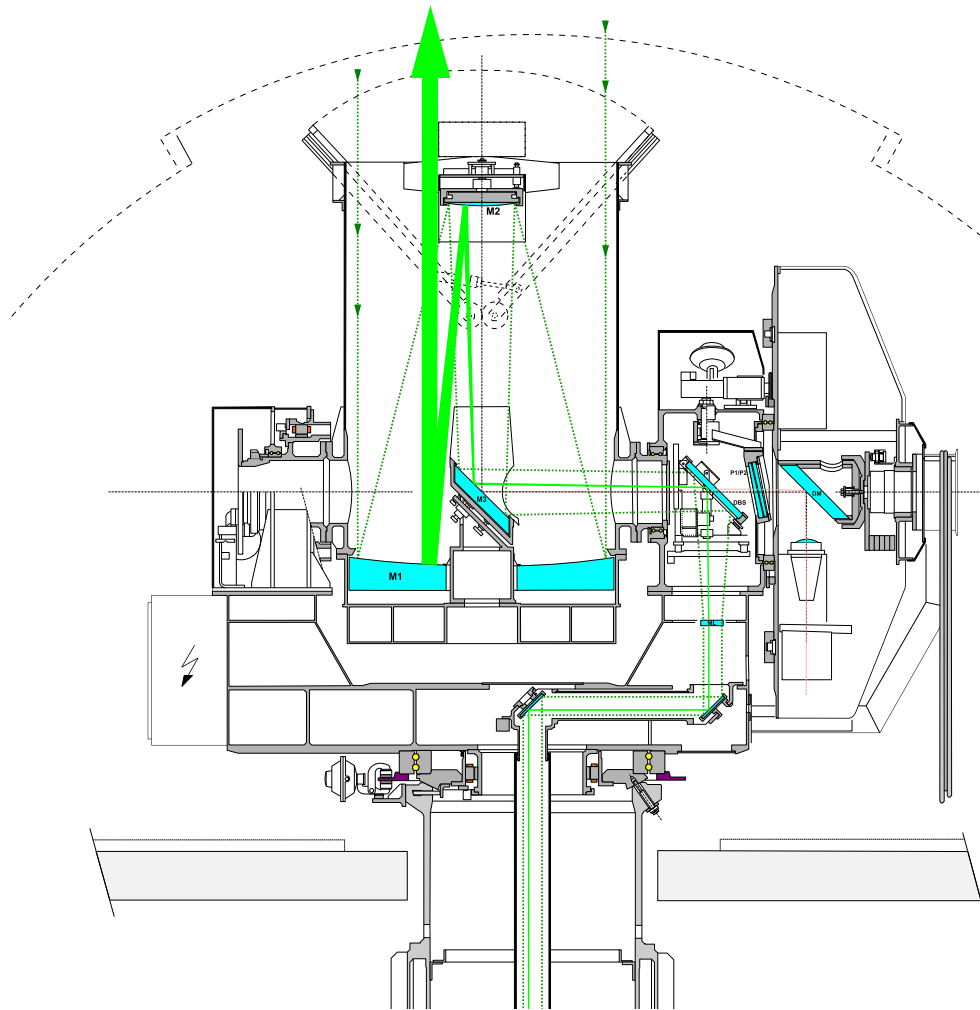
- During the last years the use of tracking cameras for SLR observations became less important due to the high accuracy of the predicted orbits.
- Upcoming new targets like satellites in eccentric orbits and space debris objects, however, require tracking cameras again.
- Since a few months the interline CCD camera was replaced at the Zimmerwald Observatory with a so called scientific CMOS camera. This technology promises a better performance for this application than all kind of CCD cameras.
- After the comparison of the different technologies the focus will be on the integration in the Zimmerwald SLR system.

Zimmerwald Observatory



M. Pfloner: The new CMOS Tracking Camera used at the Zimmerwald Observatory
18th International Workshop on Laser Ranging, 11-15 November 2013 Fujiyoshida, Japan

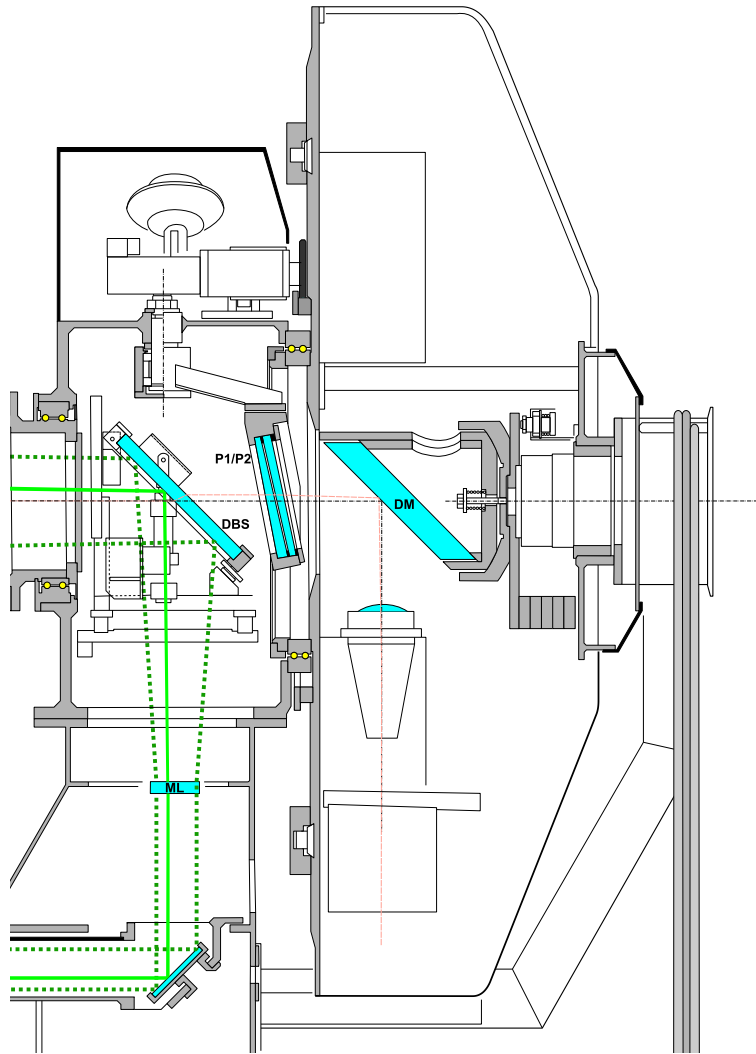
ZIMLAT - Zimmerwald Laser and Astronomy Telescope



- 1-m Ritchey Chrétien
- Altazimuth mount
- Derotator platform
- Dual use
 - SLR
 - Optical Obs.

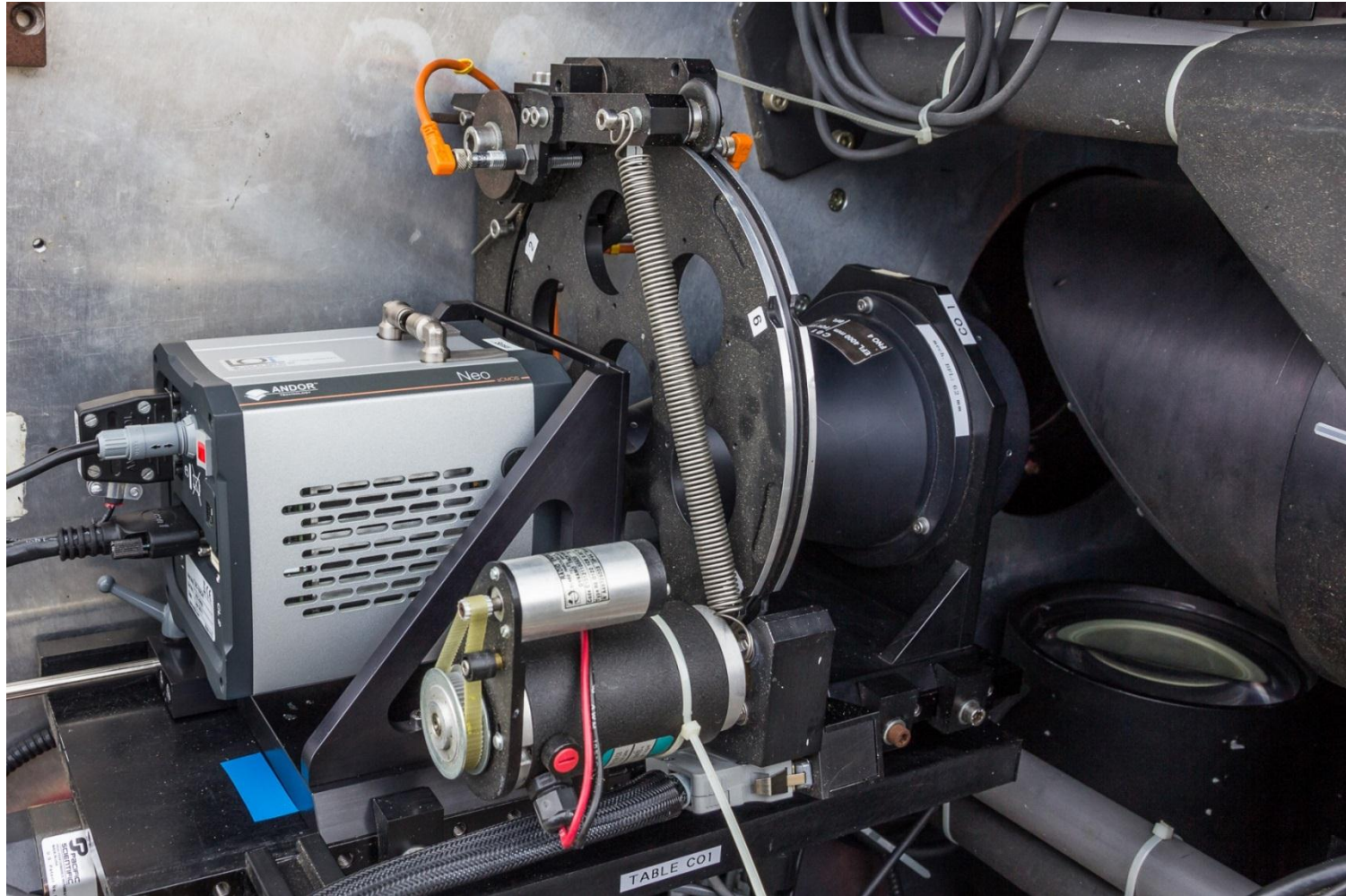
- Nd:YAG Laser
- 1064 nm / 532 nm
- 90 - 110 Hz
- 58 ps Pulselength
- 9 mj @ 532 nm

Derotator Platform

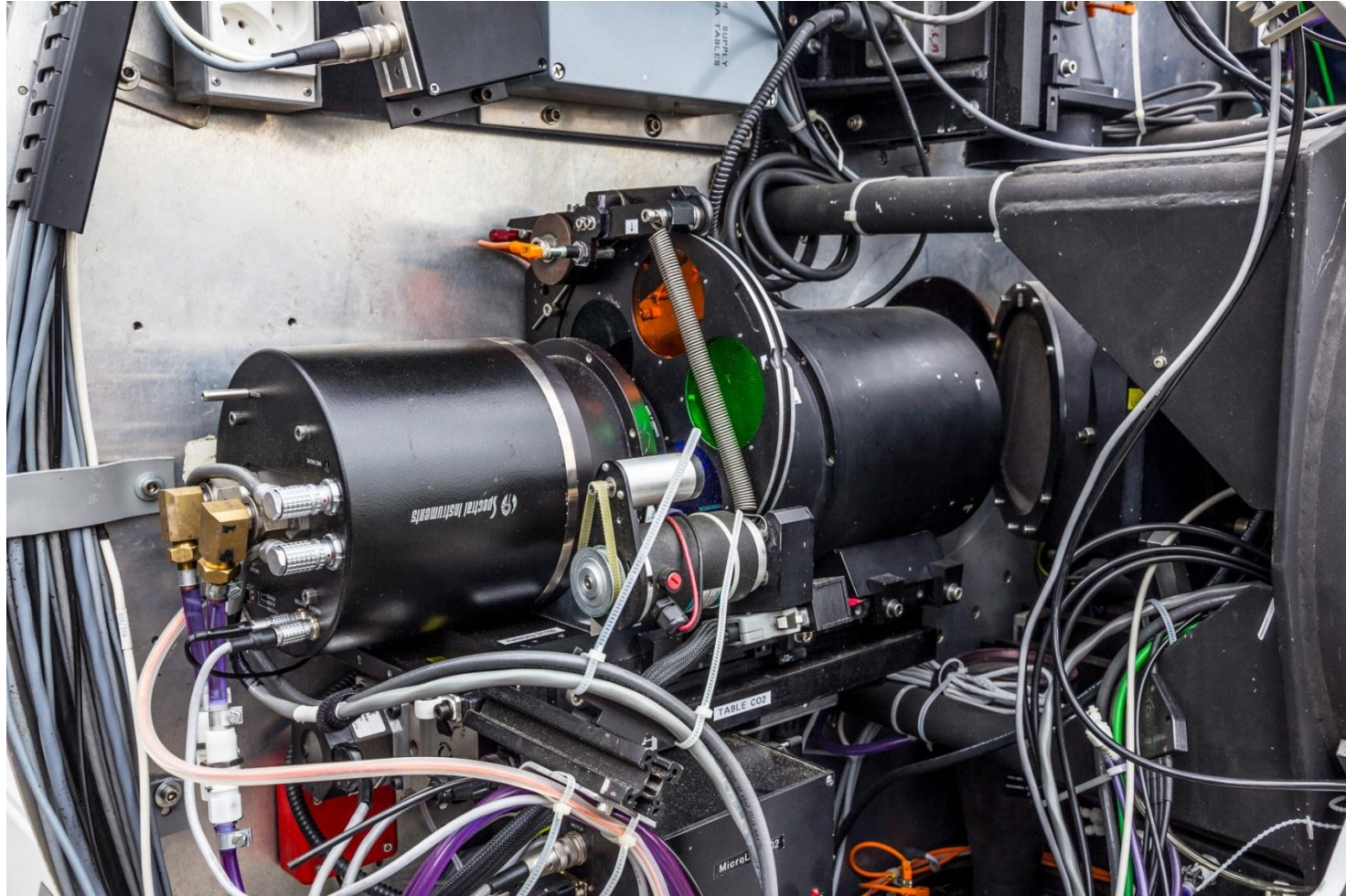


- Dichroic Mirror (DBS) allows for the use of tracking cameras simultaneously with SLR observations
- Derotator Mirror (DM) allows for the use of 4 Corrector Lenses and cameras.
- Focal length varies between 1 m, 4m and 8 m.
- 2 Trackingcameras
 - sCMOS: $\approx 10'$ FOV
 - CCD: $\approx 30'$ FOV

ANDOR NEO sCMOS Camera

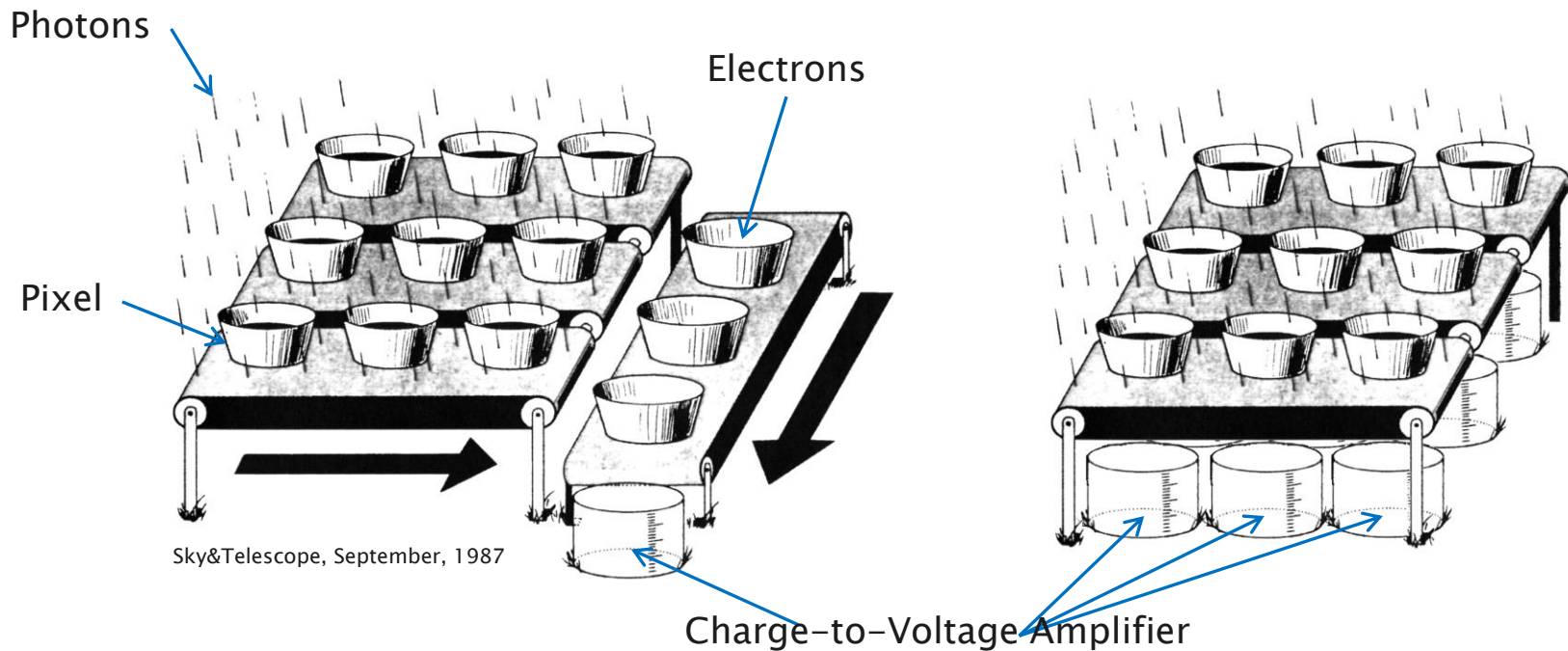


SPECTRAL INSTRUMENTS CCD Camera



M. Pfloner: The new CMOS Tracking Camera used at the Zimmerwald Observatory
18th International Workshop on Laser Ranging, 11-15 November 2013 Fujiyoshida, Japan

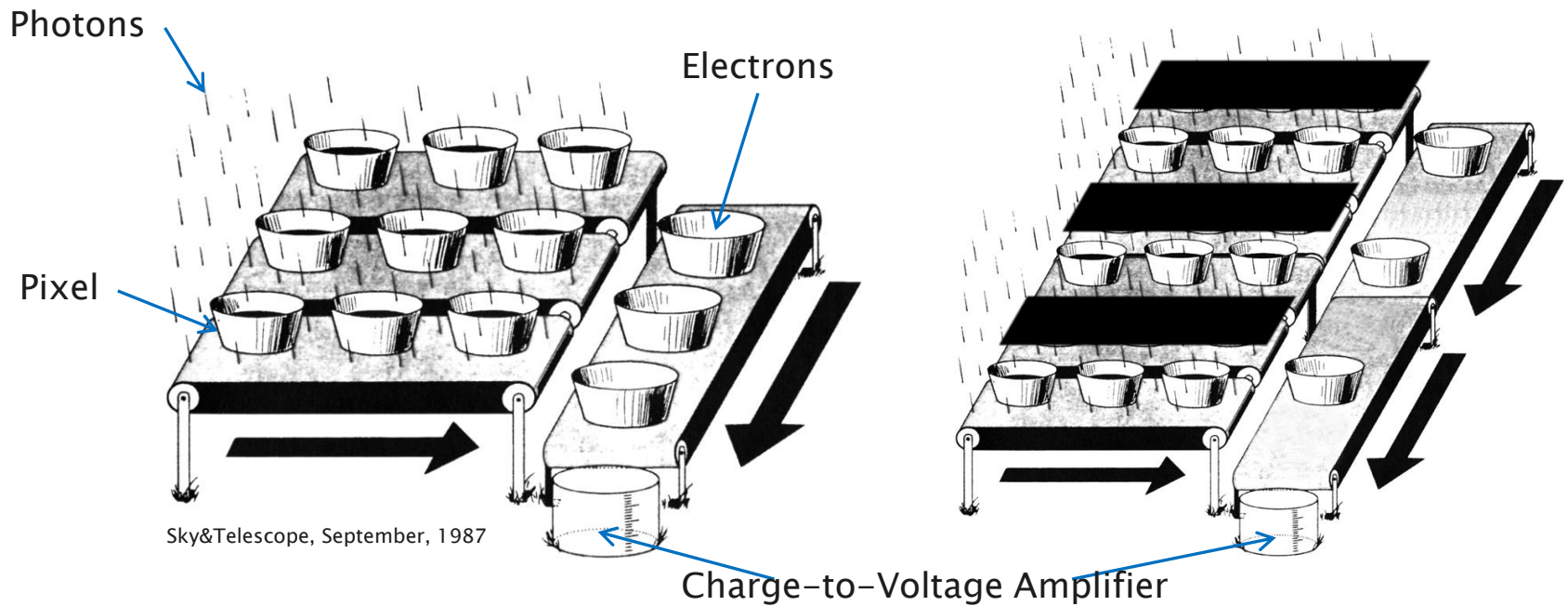
Full-frame CCD vs. CMOS



At the output amplifier(s) the photoelectrons are counted.

- CCD: photoelectrons of all pixels are counted in the same amplifier
- CMOS: number of amplifiers \triangleq number of pixels
 - On-chip binning and on-chip stacking for increasing the sensitivity is not possible
 - Individual readnoise for each pixel

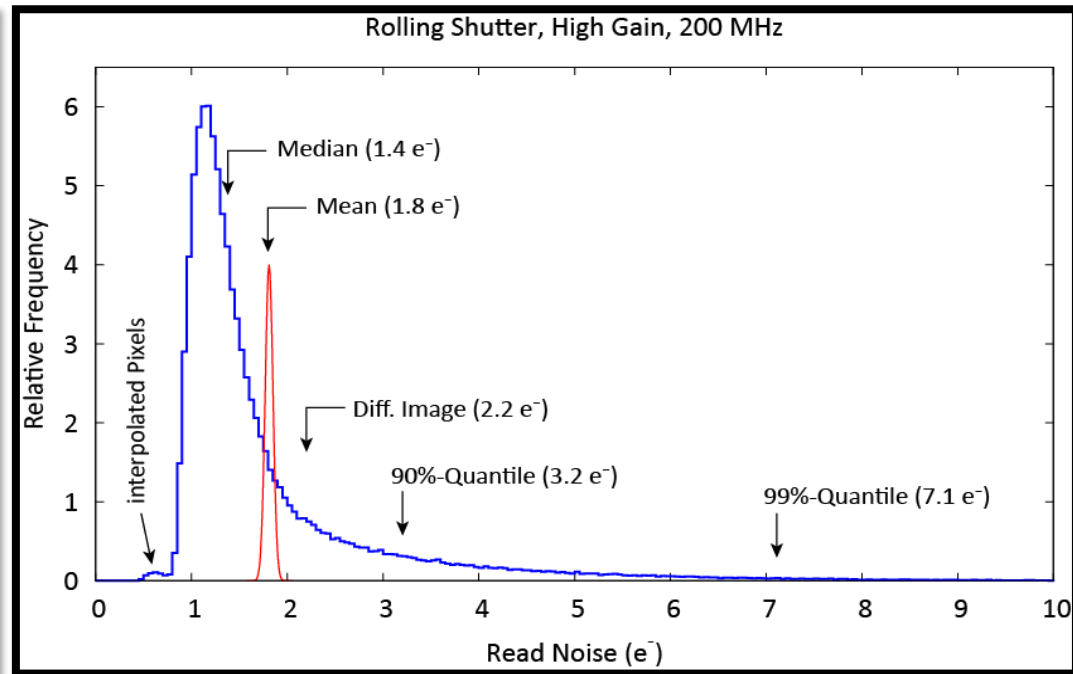
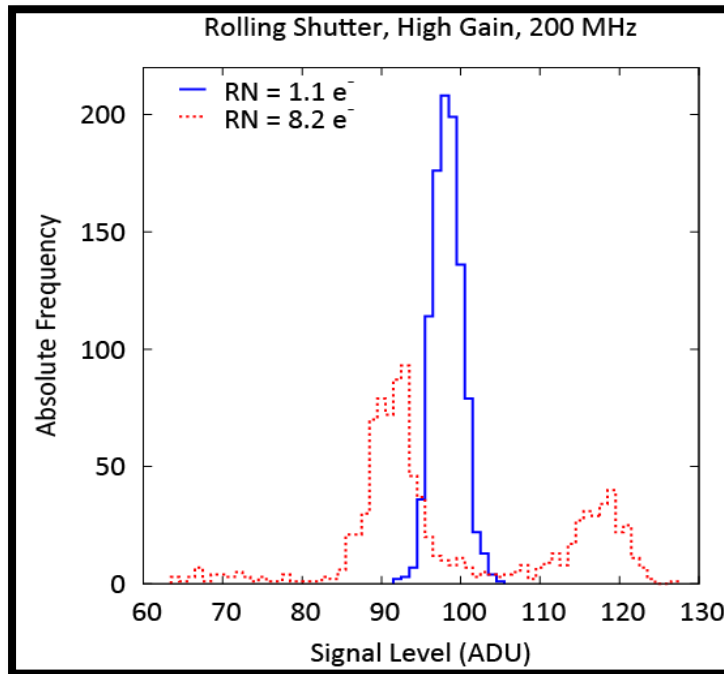
Full-frame CCD vs. Interline CCD



All photoelectrons are counted in the same output amplifier

- Interline CCD: every second column of the sensor is masked for storage
 - ⇒ fill factor of the image area is dropped by a factor of 2
 - ⇒ quantum efficiency is dropped by an equivalent amount
 - ⇒ microlenses on the surface direct light away from the opaque region
 - ⇒ no mechanical shutter necessary
 - ⇒ shutter times less than a microsecond are possible

Read Noise Andor NEO



Distribution of the signal levels of two individual pixels / entire sensor

- The read noise varies considerably from pixel to pixel
- Some pixels show a double peaked distribution
- No Gaussian distribution of the read noise
- Read noise specification between CCD (mean value) and CMOS (median value) not comparable!

Full-Frame CCD vs. Interline CCD vs. CMOS

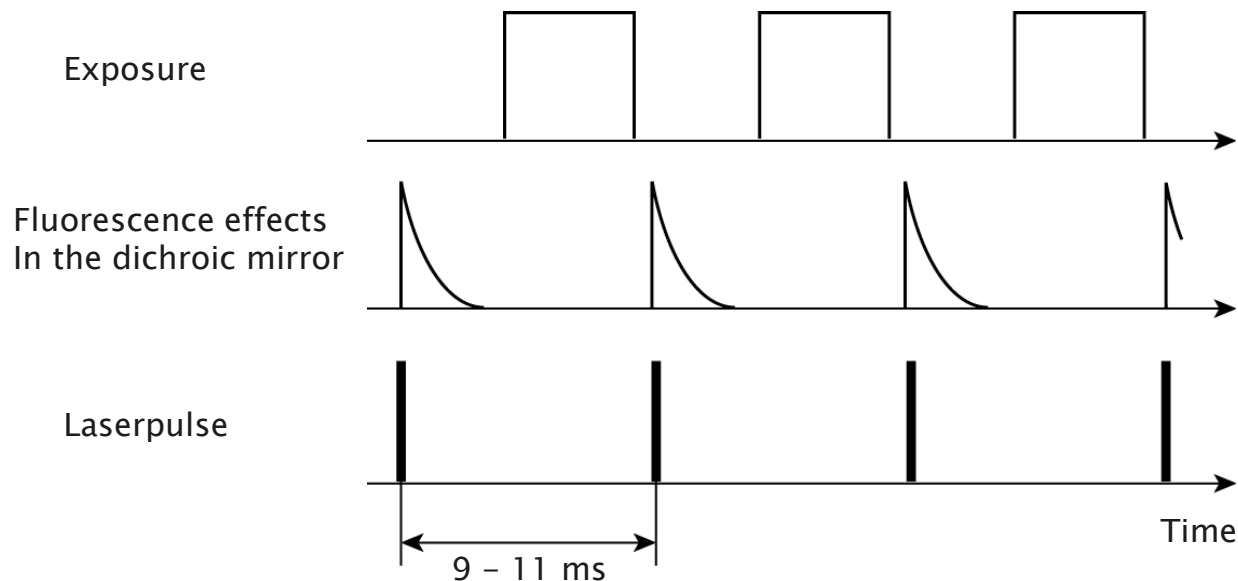
	FF-CCD	IL-CCD	CMOS
Array Size	+	-	-
QE	+	+/-	+/-
Pixel Size	+	-	-
Fast Exp.	-	+	+
Readout Time	-	+/-	+
Binning	+	+	-
Stacking	+	+	-
Readnoise	+/-	+/-	+/-
PRNU	+	+	+/-

Camera specifications

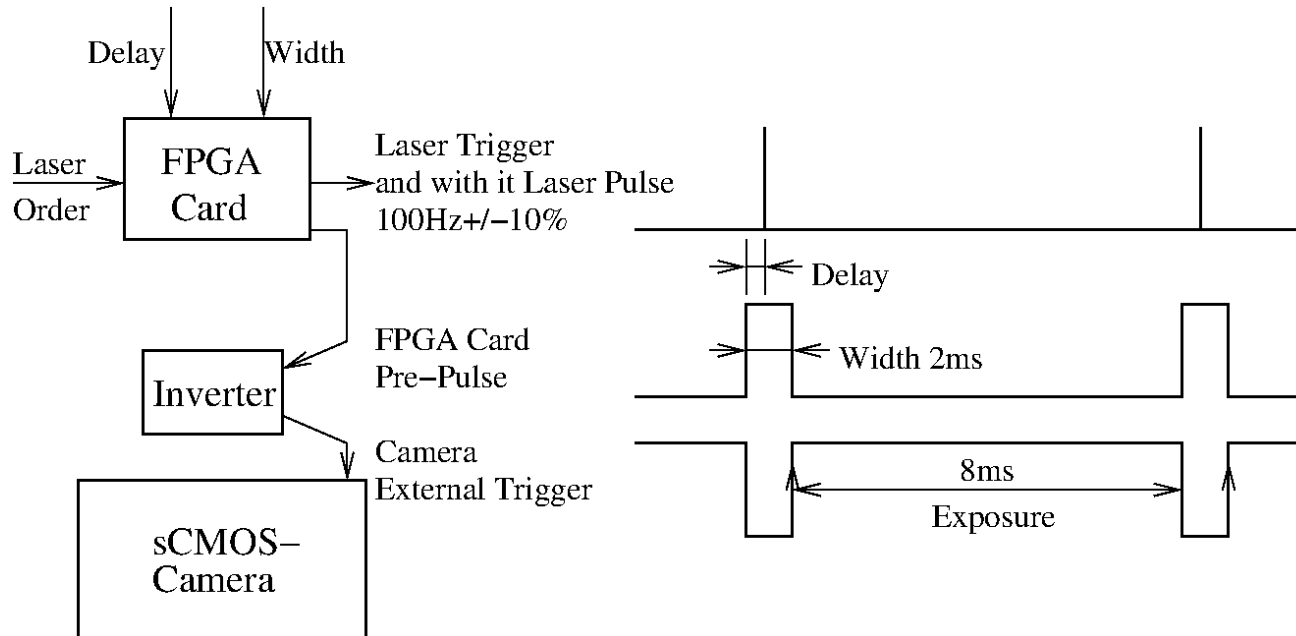
	Full-frame CCD	Interline CCD	CMOS
Factory	Spectral Instr.	PCO	Andor
Model	SI1100	Sensicam SVGA	NEO
Array Size (mm)	31 x 31	9 x 7	17 x 14
Number of Pixels	2048 x 2064	1280 x 1024	2560 x 2160
Pixel Size (μm)	15	6.7	5.5
Quantum Eff.	95 %	40 %	60 %
Full Well Cap.	150 000 e^-	25 000 e^-	30 000 e^-
Scan Rate	4 x 1 MHz	1 x 12.5 MHz	2 x 280 MHz
Readout Frequ.	1 fps	8 fps	100 fps
Readout Noise	8 e^-	8 e^-	2 e^-
Cooling	Peltier / water	Peltier / air	Peltier / water, air

Concept of the CMOS Camera Integration

- Nd:YAG Laser with a pulse rate between 90 - 110 Hz
- The sensor will be exposed between the transmitted laser pulses.
- It is not possible to make use of the full time span of about 10 ms for chip exposure due to fluorescence effects in the dichroic mirror after transmitting a laser pulse.



Realization of the CMOS Camera Integration

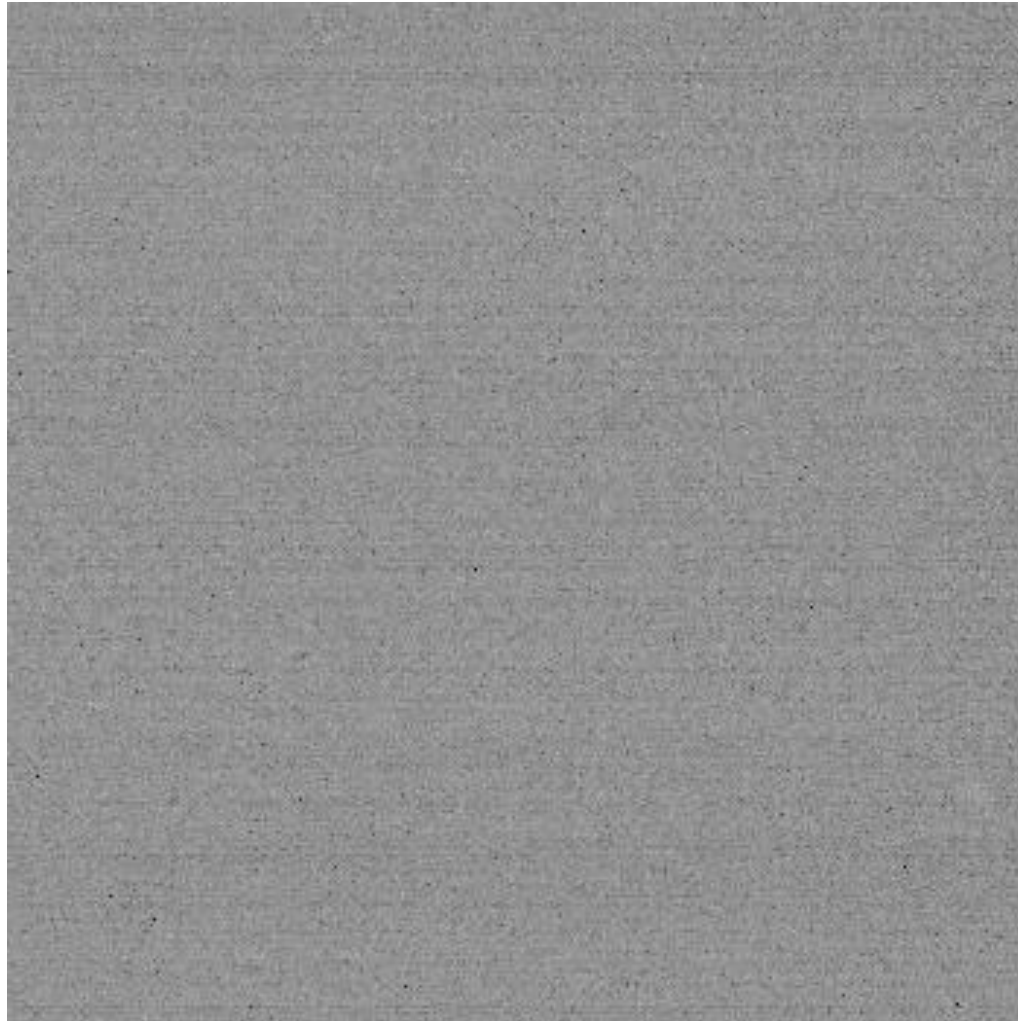


- The FPGA card, responsible for the timing of the laser, transmits a pre-pulse with variable delay and pulse width.
- This pulse can be used for triggering the exposure of the camera and for controlling the exposure time.

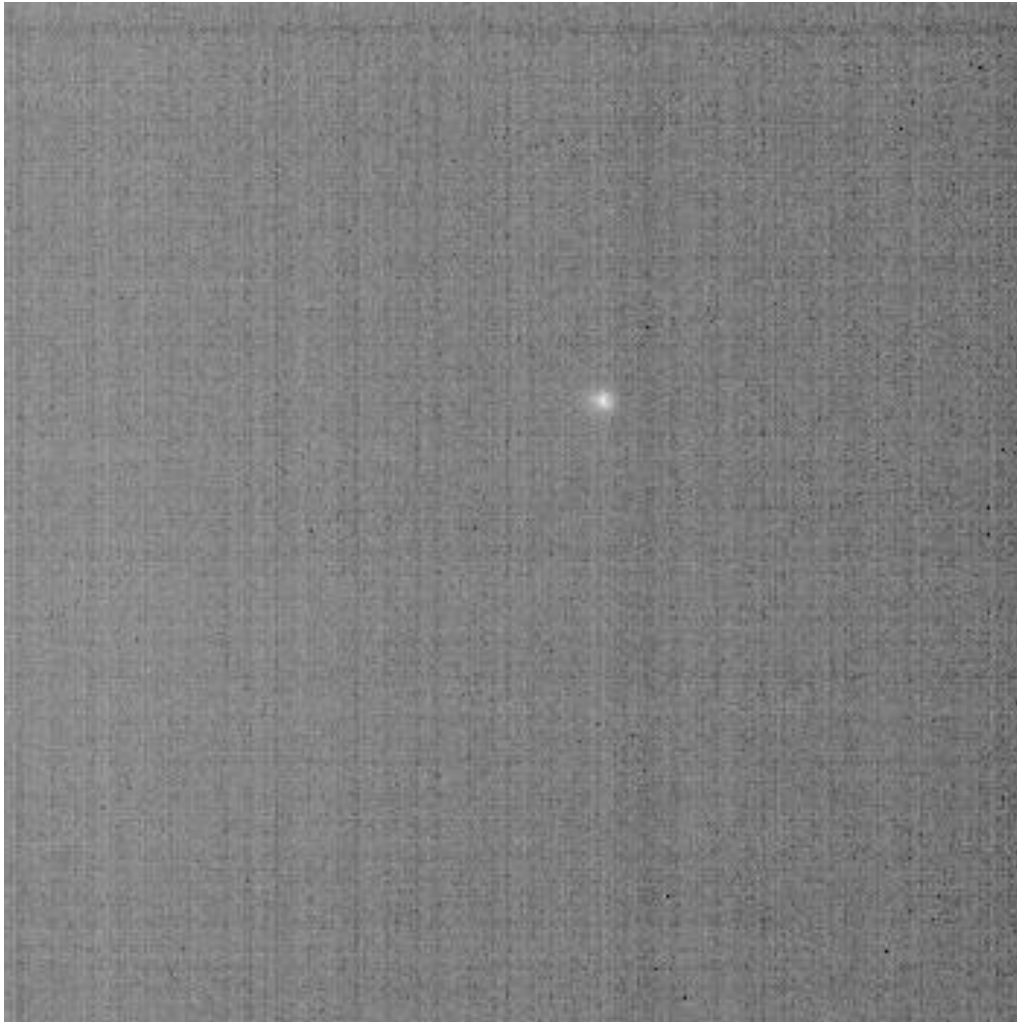
Current Status of Work

- Mechanical and electrical integration of the tracking camera in our laser system has been completed
- First tests during some satellite passes have been carried out successfully
- The CMOS camera was used already during the 'bistatic' experiment in video mode (no triggering of the individual exposures) for the pointing correction of the telescope
- During above tests some problems have been identified that prevent to use the camera on a routine basis:
 - GUI is not user friendly
 - Default settings cannot be stored (more than 40 modes of operation available)
 - No continuous acquisition mode available
 - Contrast and brightness of the displayed images not flexible enough
 - No cross hairs available
 - Unknown rotation of the image w.r.t. zenith resp. moving direction of the satellite
 - No Autofocus function available
 - Point of highest echo rate is not stable on the image

Ajisai – No accumulation

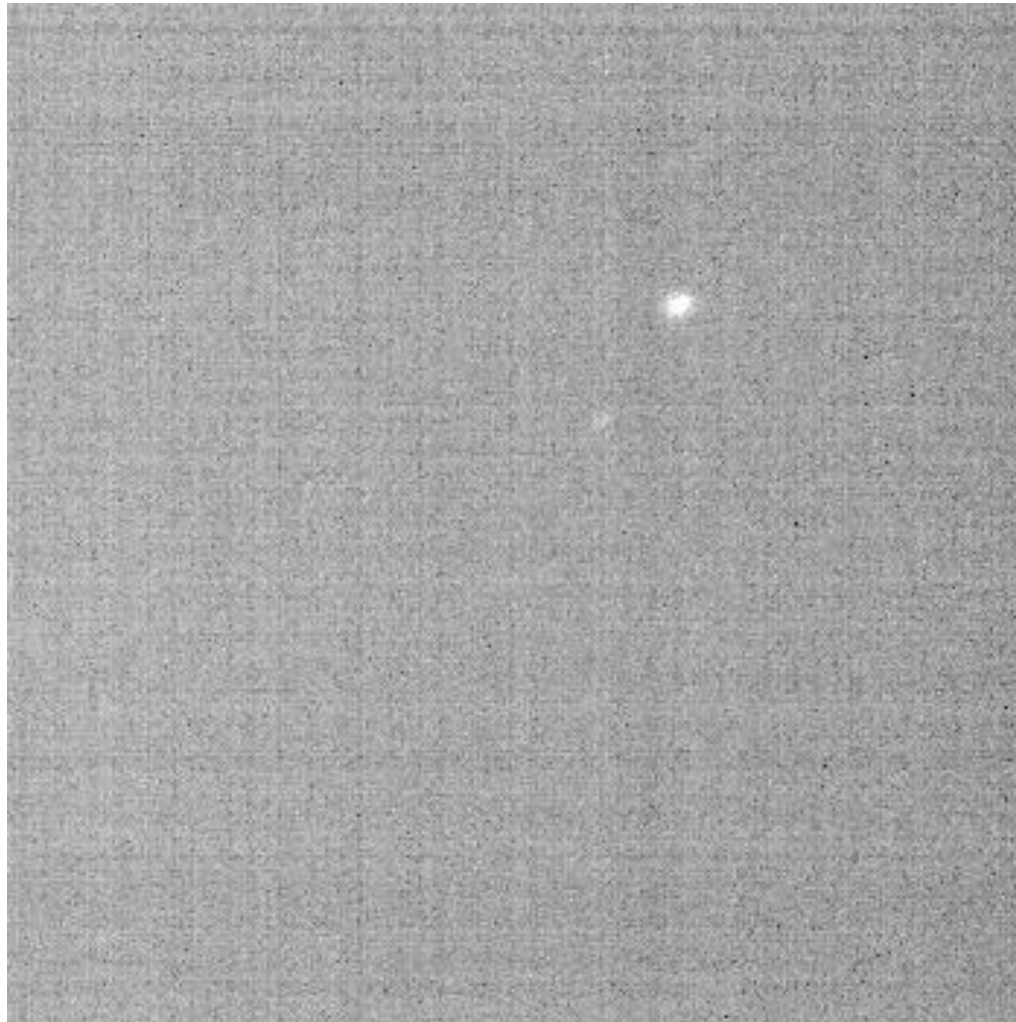


Ajisai – accumulation of 10 images

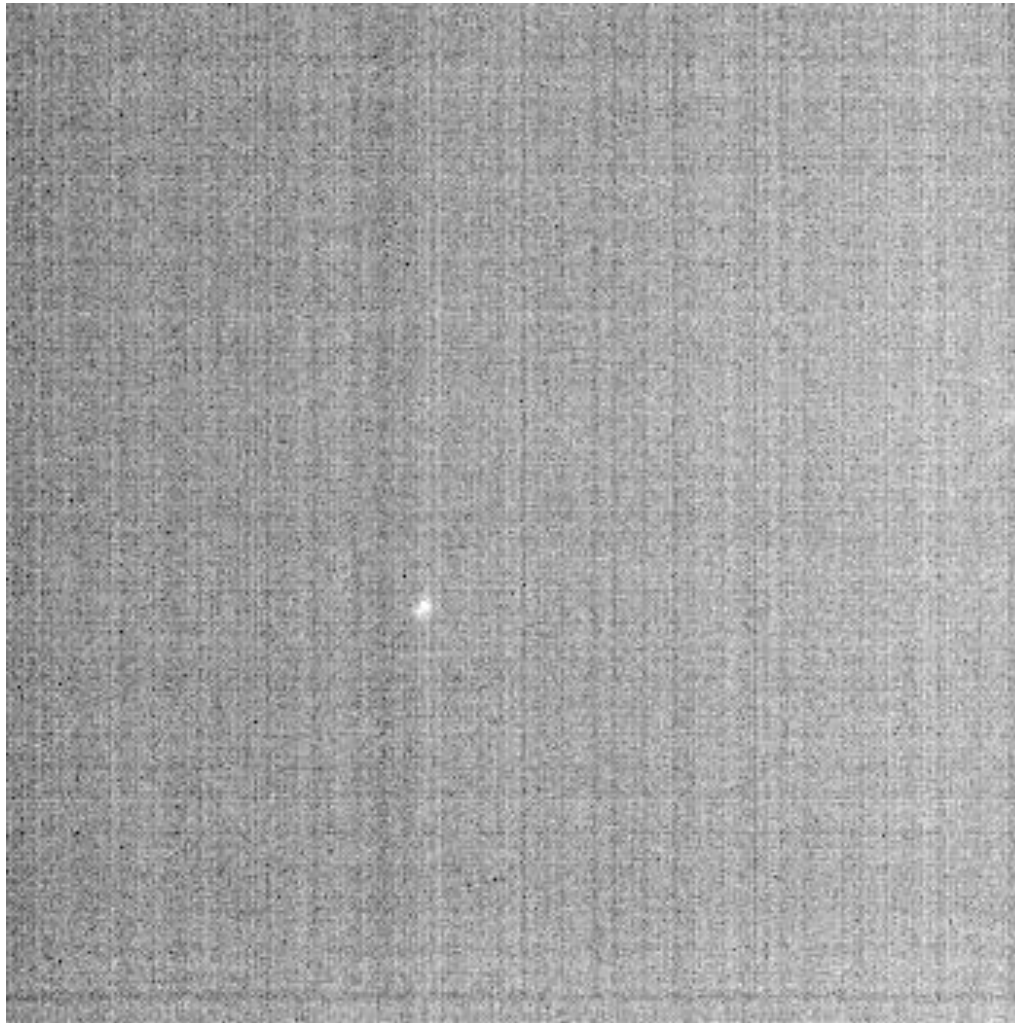


Fixed-pattern noise

Glonass 107 – No accumulation

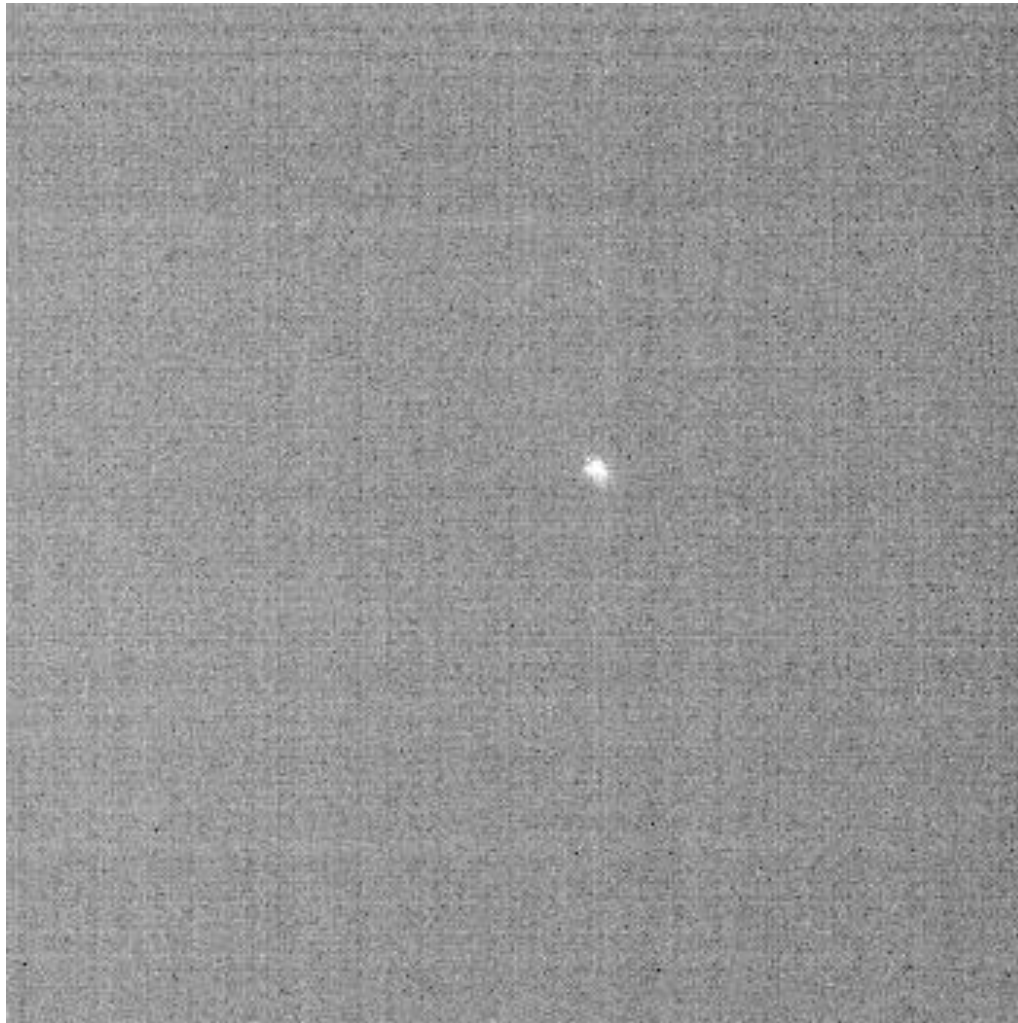


Glonass 107 – accumulation of 10 images

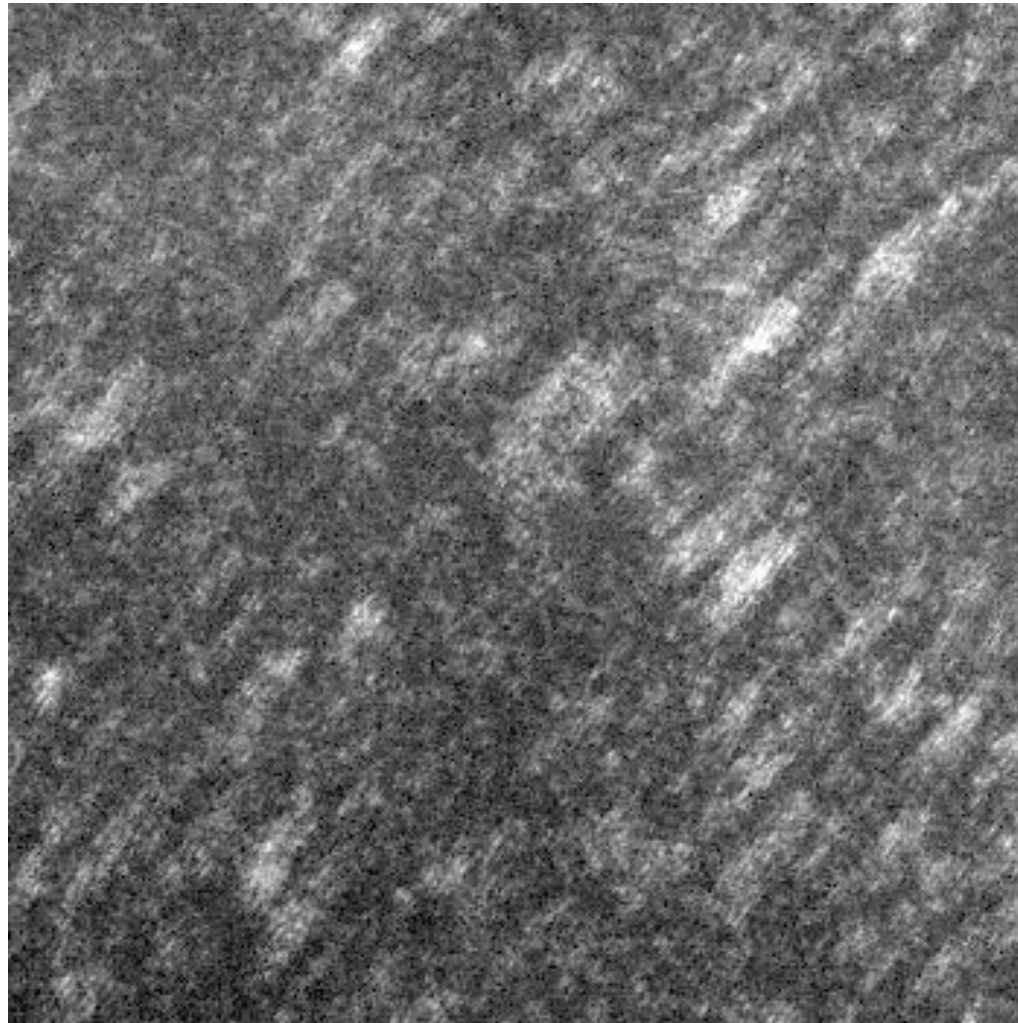


Fixed-pattern noise

Hy2A - No accumulation



Hy2A - Laser pulses



Saral – accumulation of 10 images

